

# Kent School District

Leadership Organization Chart

Effective July 1, 2023





# Overview / Objectives

- **Reorganization Overview**
- **Systems Coherence**
- **2023-24 Reorganization**





**Superintendent**

Israel Vela

**Deputy**

**Superintendent**

Dr. Wade Barringer

**Operations**

Dr. Wade  
Barringer

Athletics & Activities,  
Capital Projects,  
Environmental Services,  
Facilities,  
Maintenance,  
Safety Services,  
Technology Operations  
& Support Services,  
Transportation Services,  
Warehouse &  
Distribution Services

**Learning Supports**

Randy Heath

Accountability & Strategy,  
Assessment, Advanced  
Learning, CTE,  
Title 1 & LAP, Coordinated  
Health Services, Data  
Services & Support,  
Inclusive Education,  
Multilingual  
Education, Performance  
Outcomes & Data,  
Research & Evaluation,  
Strategic Initiatives &  
Program Operations,  
Student & Family Support  
Services, Student  
Supports, Student  
Success

**Teaching &  
Learning**

Dr. Rebekah Kim

Elementary Teaching  
& Learning,  
Curriculum &  
Instruction,  
Digital Learning,  
Learning  
Improvement,  
Professional  
Development  
Operations,  
Secondary Teaching  
& Learning  
Teacher & Leadership  
Development

**Finance**

Ben Rarick

Accounting,  
Budget & Finance,  
Business Services,  
Risk Management,  
Nutrition Services,  
Payroll,  
Procurement

**Human Resources**

Daman Hunter

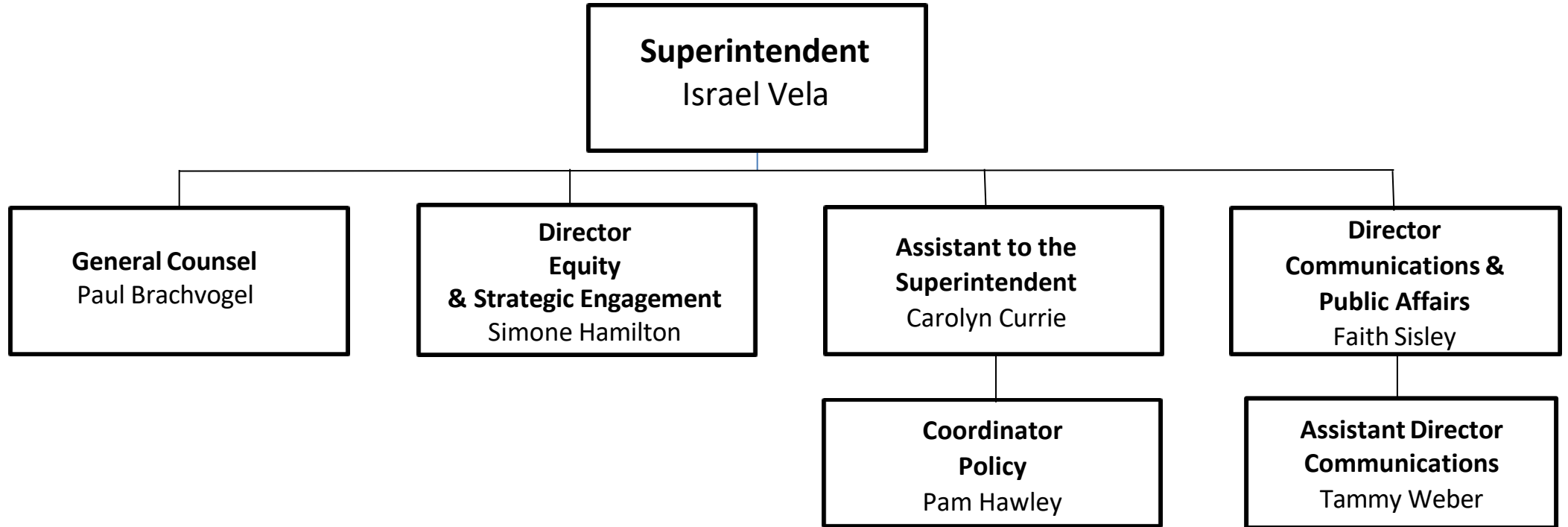
Benefits,  
Employment  
Support,  
Labor Relations,  
HR Operations,  
Substitute Services





# Superintendent's Office

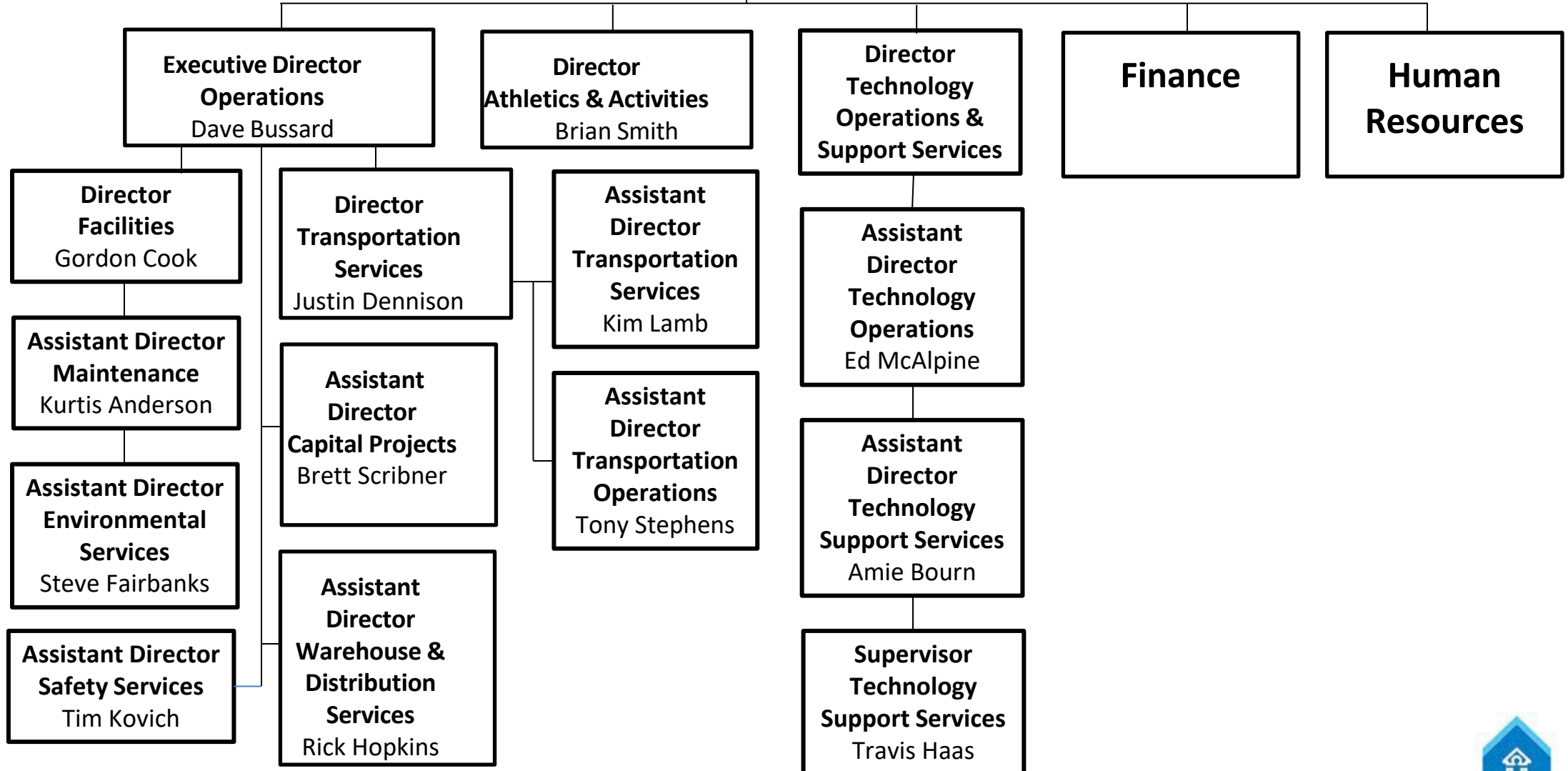
**KENT  
SCHOOL  
DISTRICT**



## Operations

**Deputy Superintendent**  
Dr. Wade Barringer

## Communities

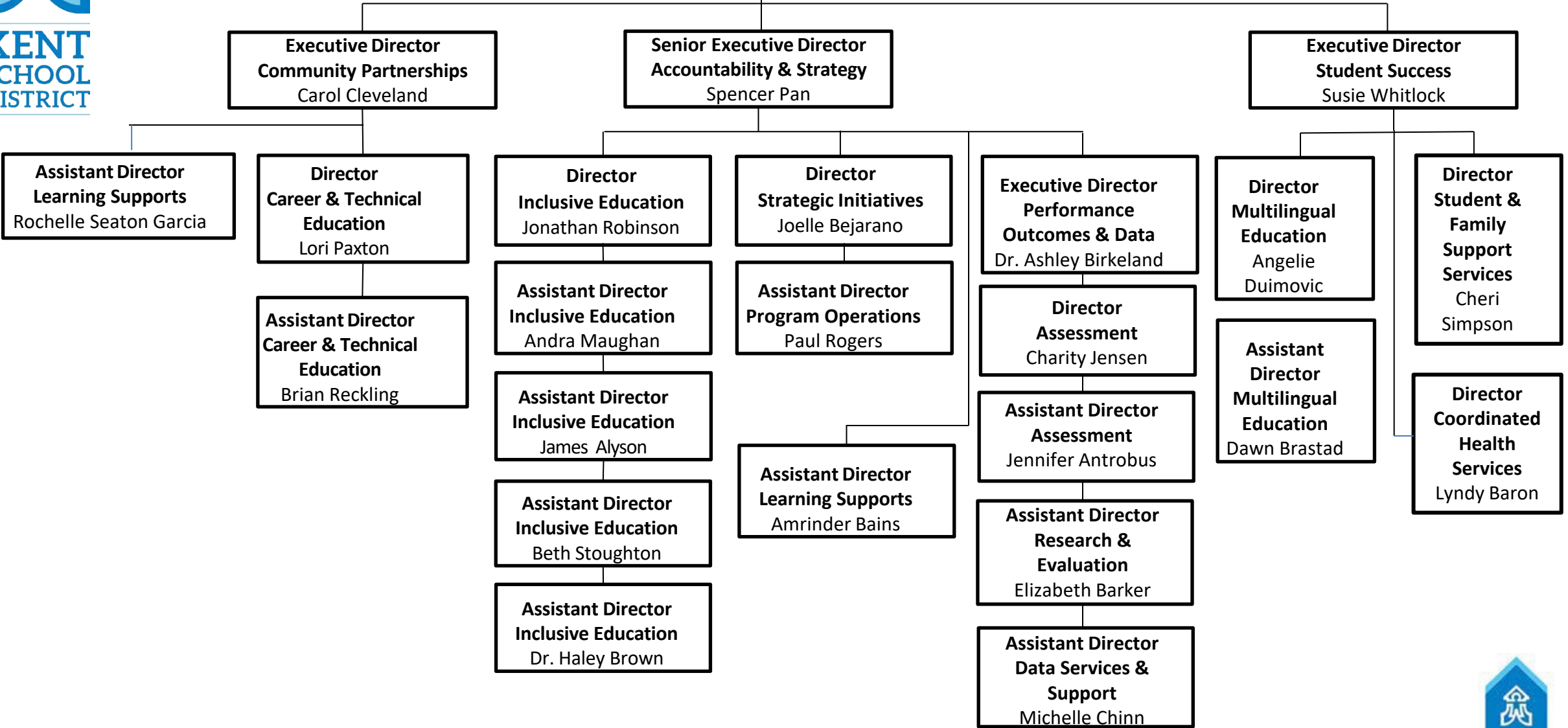




# Learning Supports

**KENT**  
SCHOOL  
DISTRICT

**Associate Superintendent  
Learning Supports**  
Randy Heath





**KENT  
SCHOOL  
DISTRICT**

# Teaching & Learning

**Associate  
Superintendent  
Teaching & Learning  
Dr. Rebekah Kim**

**Executive Director  
Elementary Teaching &  
Learning  
Cynthia Green**

**Executive Director  
Secondary Teaching &  
Learning  
Dr. Christine Corbley**

**Office  
of  
Learning Improvement**

**Assistant Director  
Teaching & Learning  
Marcie Baril**

**Coordinator  
ELA/SS  
Amy Abrams**

**Assistant Director  
Teaching & Learning  
Dr. Chris White**

**Director  
Teacher &  
Leadership  
Development  
Cathy Lendosky**

**Executive Director  
Dr. Christine Avery**

**Coordinator  
ELA/SS  
Karen Stevens**

**Assistant Director  
Digital Learning  
Melissa Benner**

**Assistant Director  
Professional  
Development  
Operations  
Kim Cushman**

**Executive Director  
Patty Drobny**

**Coordinator  
Science  
Jon Rismiller**

**Executive Director  
Darice Johnson**

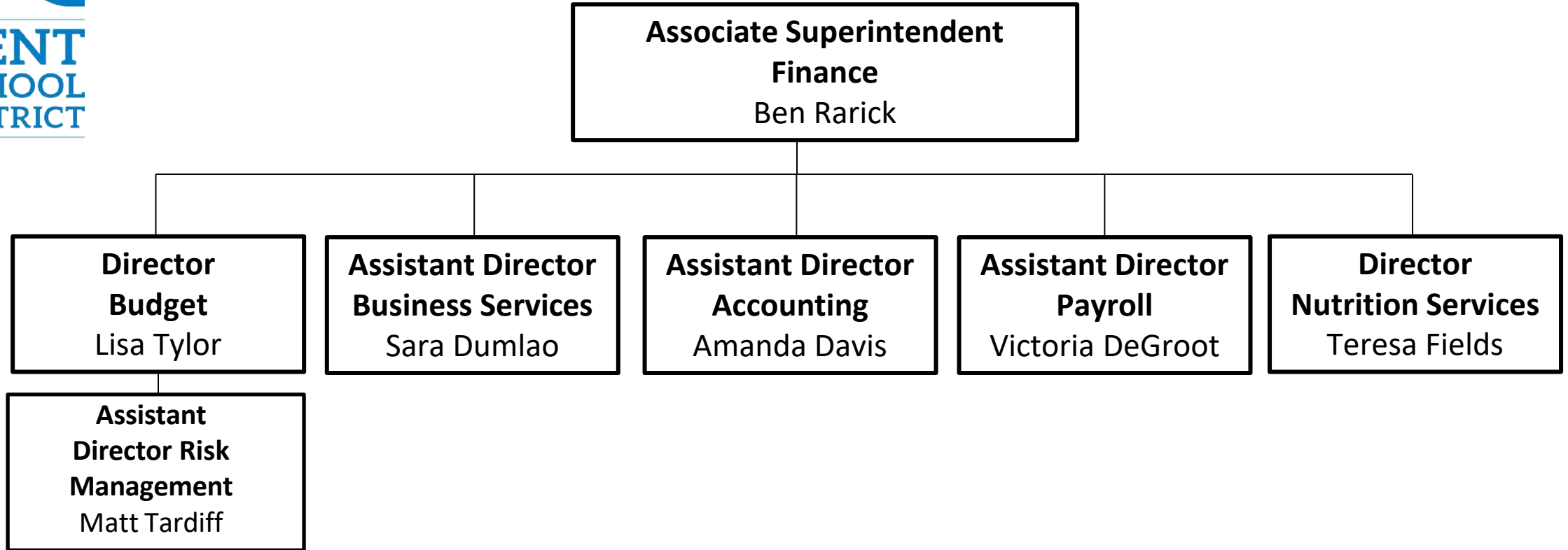
**Executive Director  
Jim Schiechl**





# Finance

**KENT  
SCHOOL  
DISTRICT**

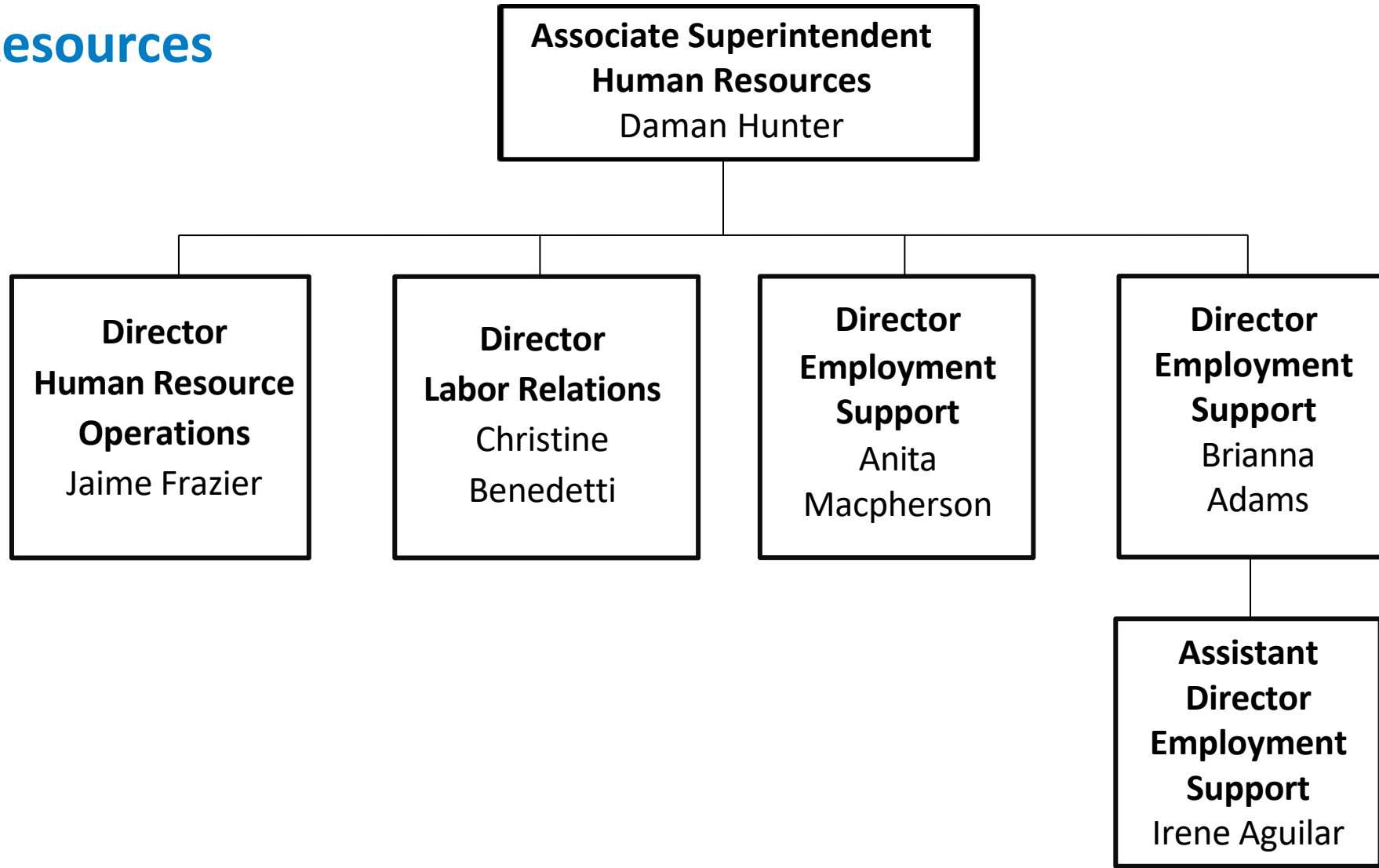






**KENT  
SCHOOL  
DISTRICT**

## Human Resources





# Thank you

#startstrong

#staystrong

#finishstrong

*Successfully Preparing All  
Students for Their Futures*